



VP 750

Powered by
memjet

info@graamex.com

FAST • ON-DEMAND • IMPROVED WATER RESISTANT

The VP750 by VIPColor is the next generation of digital print-on-demand colour label printer with **Enhanced Water Resistance Print Technology**¹

Building on the proven technology of our bestselling VP700, it utilises Enhanced Water Resistance Print Technology¹ that produces vibrant coloured labels. The result is great looking colour labels that are suitable for Chilled Food & Beverage, Animal Care, Cleaning products, Chemicals, Pharmaceutical products and most moisture exposed products.

The VP750 combines the performance and reliability of VIPColor VP700 industrial colour label printers, with the new improved inks system that gives **better water (and many solvent) resistant labels**, compared to other dye ink printers and longer lasting printhead versus first generation of Memjet printers. Ruggedly designed yet intuitive for in-house label production and private labelling needs, the **VP750 brings fast, affordable colour printing to any print environment.**



**Enhanced Water Resistance
Print Technology**

Key Benefits

**Digital
colour label
printer**

**Up to 18 m/min
print speed**

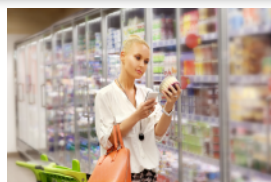
**Up to
1600x1600 dpi
resolution**

**Ruggedized for
industrial usage**

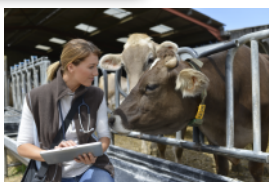
**Enhanced Water
Resistance
Print Technology**

**Longer lasting
printhead**

Key Markets



**Refrigerated Food
& Beverage**



**Animal Care &
Veterinary products**



**Home Care &
Cleaning products**



**GHS & Chemical
products**



**Pharmaceutical
products, Body care
& Medical Tests**

**Reduce the complexity, avoid obsolete
labels, save time and money.**

WITH VP750 LABEL PRINTER



- Order only blank label stock of different sizes.
- Receive and do minimal inspection.



- Inventoried in less storage shelf space.
- Easier to locate label stock.



- Reduces reloading of label stock and utilizes one printer only.



- Print on demand and change label design within minutes.

**VIP
COLOR**

¹For Memjet™ ink compatible label stock, we strongly recommend that the user perform a print check for compatibility before using the label stock for production, follow the recommendations from the manufacturer and the optimal printer settings. Compatible with synthetic and paper based label. However, the user is advised to conduct their own tests for compatibility prior to mass production.

Printer Specifications



PERFORMANCE

Print speed	Up 304,8 mm per second (18 m/minute, or 12 ips)
Print resolution	Up to 1600 x 1600 dpi
Data connectivity	USB 2.0 ; Ethernet 10/100Base-T ; GPIO
Ink	Enhanced Water Fast Inks in individual 250 ml CYMCK ink cartridges
Power supply	Universal internal power supply
Barcode PQ	1D barcode at least Grade B (Code 39) with 10mils bar width 2D barcode at least Grade B (PDF417) with 10mils cell size

MEDIA HANDLING

Print modes	Roll-Roll, Roll-Cut, Print & Hold (non-peel)
Label media width	50,8 - 215,9 mm (2" - 8,5")
Max. label length	Up to 1,016 m (40")
Label media thickness	0,1 - 0,3 mm
Supported media	Glossy , Semi-Gloss and matt inkjet coated media
Qualified label stocks	Please refer to media compatibility list of VIPColor printers
Detection	Gap, continuous, black mark

OPERATING ENVIRONMENT

Operation	15 to 35°C at RH 20-80%
Storage	-5 to 50°C

REGULATORY & SAFETY

Standards / Approvals	CE (Europe), FCC Part 15, Subpart B, Class A (US) EC 60950-1 Compliance (International), cULus (US/Canada)
-----------------------	-----------------------------------------------------------------------------------------------------------------------

USABILITY & SERVICEABILITY

User interface	Embedded web server Backlit LCD control panel in 9 languages LED for printer warnings & readiness indication Unobstructed accessibility to service bays for print-head and ink tanks
Aesthetics	Designed for ease of setup, troubleshooting and servicing Metallic casing with industrial grade ruggedness
Printer driver compatibility	Microsoft® Windows 7/ Windows10 (32 / 64 bits); Windows Server 2003/2008 R2/2012 (32/64 bits)
Supported network protocol	TCP/IP (Static IP or DHCP Auto)
Acoustics	Sound pressure level less than 60dBA (both operator / bystander position)

ACCESSORIES & OTHERS

Built-in accessories	Integrated un-winder (with enclosure for paper dust removal) as standard for up to 200 mm (8") OD label roll with 76 mm (3") core. Built-in automatic cutter.
Product size	476 mm x 497 mm x 585 mm (18,7" x 19,6" x 23,0")
Weight (printer only)	35 kg (77 lbs)
Warranty	1 year limited warranty or 5M inches - whichever comes first

SHIPPED

Included items	Printer (integrated with un-winder) Printhead and CMYKK ink cartridges are sold separately
----------------	-------------------------------------------------------------------------------------------------

Note:

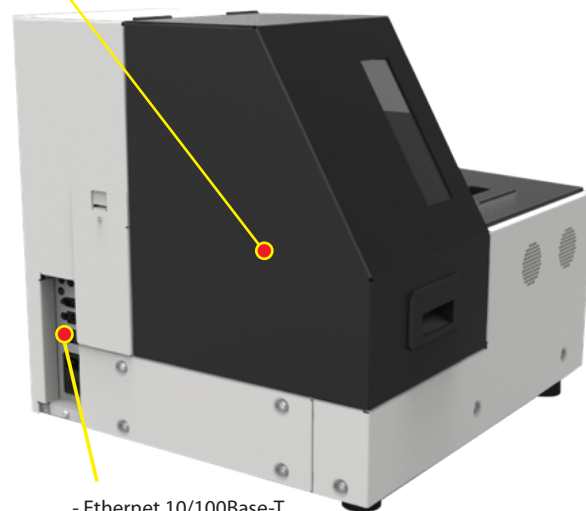
- Barcode PQ is dependent on label media compatibility with the ink.
- Limited warranty does not include consumables, ink supplies and printhead.
- * Windows is a registered trademark of Microsoft Corporation in the United States and other countries.

Printer Overview

The VP750 supports all major Microsoft Windows based label and graphics design applications like



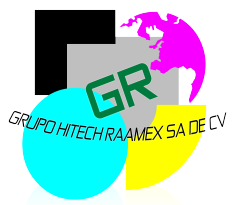
External Un-winder
for 200mm (8") OD roll



- 215,9 mm (8.5") print width
- Up to 1600 x 1600 dpi
- Supports Roll-Roll, Roll-Cut, Print-Hold & Fan-Fold modes
- Fast Time-to-First Label < 10s
- Automatic cutter
- Remote access via Embedded Web Server

- Ethernet 10/100Base-T
- GPIO
- USB 2.0
- Power Input

All connection ports are neatly designed and well placed at the back panel



GRUPO HITECH RAAMEX SA DE CV

Plutarco Elias Calle1180
Col. Militar Marte. Iztacalco
DF, Mexico 08830

Tel: (+52) 55 9180 4827
Email: info@graamex.com

Skype: rubenar9
www.graamex.com.mx