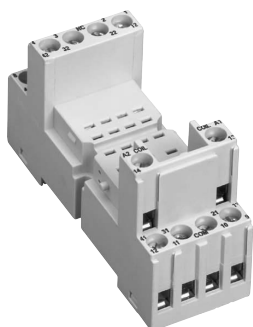


Accessories for pluggable interface relays CR-M

Sockets

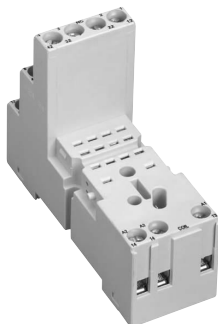
Data sheet

2CDC 291 041 F0004



CR-M4SS

2CDC 291 042 F0004



CR-M4LS

2CDC 292 072 F0004



CR-MH

Features

- Logical and standard socket for interface relays CR-M
- Snap-on mounting on DIN rail
- Width 27 mm
- Connector for pluggable function modules: reverse polarity protection, LED indication, RC element, overload protection

Approvals



Marks



Ordering data

Type	Version	Order code
------	---------	------------

Sockets

CR-M2LS	Logical socket for 2 c/o	1SVR 405 651 R1100
CR-M3LS	Logical socket for 3 c/o	1SVR 405 651 R2100
CR-M4LS	Logical socket for 2/4 c/o	1SVR 405 651 R3100
CR-M2SS	Standard socket for 2 c/o	1SVR 405 651 R1000
CR-M3SS	Standard socket for 3 c/o	1SVR 405 651 R2000
CR-M4SS	Standard socket for 2/4 c/o	1SVR 405 651 R3000

Socket accessories

CR-MH	Holder for CR-M socket	1SVR 405 659 R1000
-------	------------------------	--------------------

Socket including marker. Packing unit 10 = pieces.
Relays and pluggable function modules see separate data sheet.

Technical data

Type		CR-MxSS	CR-MxLS
Output circuits		11-12/14, 41-42/44, ...	
Number of poles		2, 3 or 4	
Rated voltage		300 V AC	
Rated current		12 A	
General data			
Dimensions (without holder)	(L x W x H)	75 x 27 x 42.5 mm	75 x 27 x 61 mm
Weight			
Mounting position			
Degree of protection	terminals	IP 20 B (EN 60529)	
Temperature range	operation	-25 °C ... +85 °C	-40 °C ... +85 °C
	storage	-25 °C ... +85 °C	
Wire size	rigid or flexibel	2 x 2.5 mm ² (2 x 14 AWG)	
	with wire end ferule	2 x 1.5 mm ² (2 x 16 AWG)	
Torque		0.8 Nm	
Mounting		DIN rail (EN 50022)	
Material	socket	PA 6+GF - V2	
	contacts	CuZn33	
	contact surface	5µ tinned	
	terminals	8 µ galvanized	
	combi screw M3	8.8 Steel, 5µ nickelized	
Isolation data			
Insulation voltage		< 4 kV	< 3 kV
Isolation between coil and contacts		VDE 0106 / 101	
Clearance and creepage distance		C250, VDE 0110b / 2.79	

Accessories for pluggable interface relays CR-M

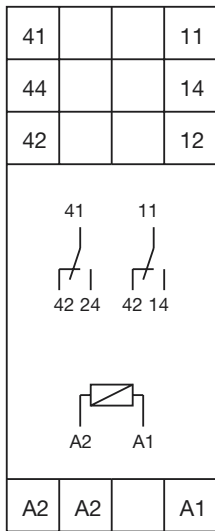
Sockets

Data sheet

Technical data (continued)

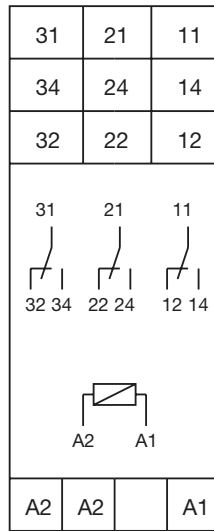
Type	CR-Mxss	CR-MxLS
Standards		
Product standard	EN 61984: 2001	
Low Voltage Directive	73/23/EEC	
Approvals / marks		
Approvals	RU(UL), cRUus, CSA, GOST	
Marks	CE	

Position of connection terminals



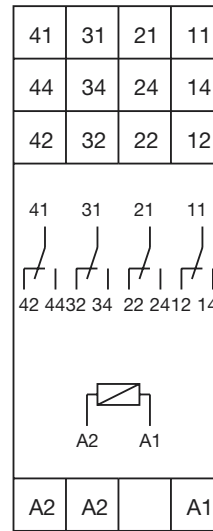
2CDC 292 075 F0004

CR-M2LS



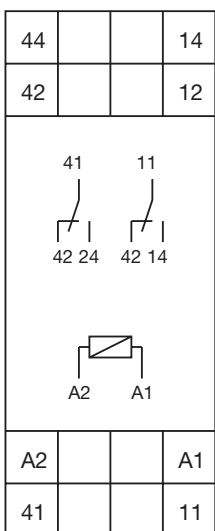
2CDC 292 074 F0004

CR-M3LS



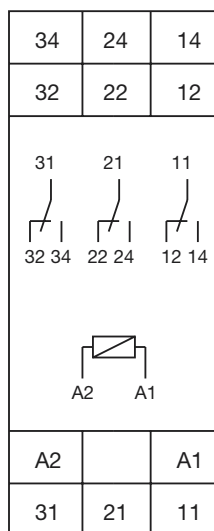
2CDC 292 073 F0004

CR-M4LS



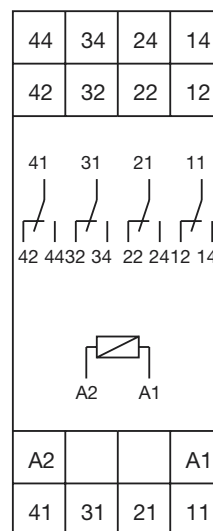
2CDC 292 070 F0004

CR-M2SS



2CDC 292 069 F0004

CR-M3SS



2CDC 292 068 F0004

CR-M4SS

A1-A2 Supply voltage
11-12/14 Relay outputs
41-42/44

A1-A2 Supply voltage
11-12/14 Relay outputs
21-22/24
31-32/34

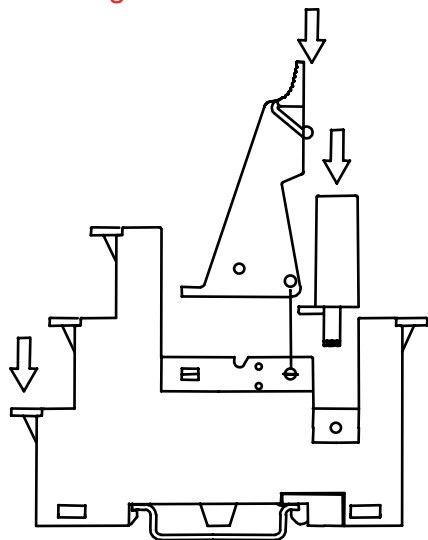
A1-A2 Supply voltage
11-12/14 Relay outputs
21-22/24
31-32/34
41-42/44

Accessories for pluggable interface relays CR-M

Sockets

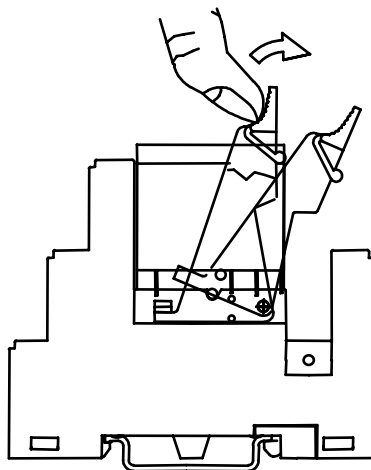
Data sheet

Mounting



2CDC 292 061 F0004

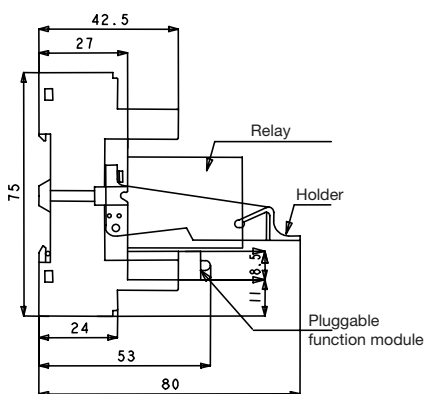
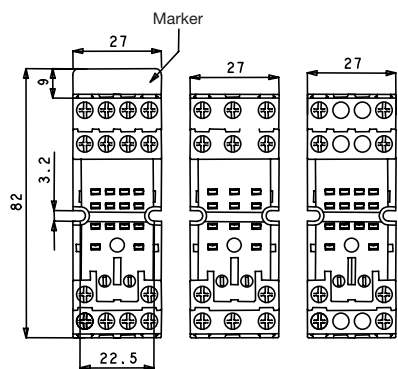
Removal



2CDC 292 062 F0004

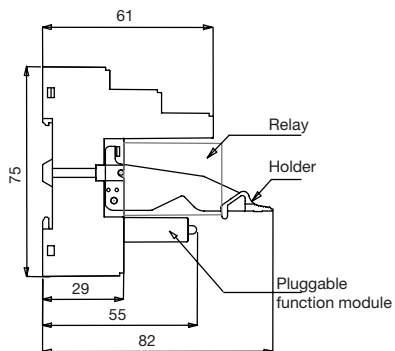
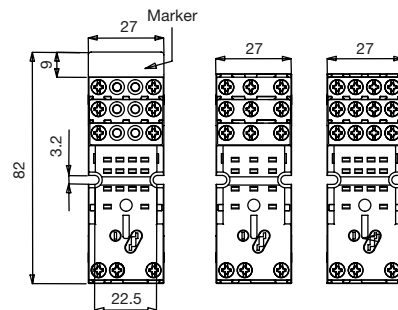
Dimensions

in mm



2CDC 292 071 F0004

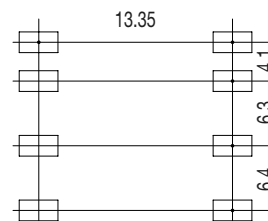
CR-MxSS



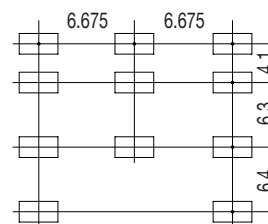
2CDC 292 076 F0004

CR-MxLS

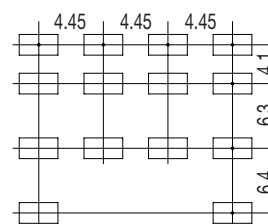
Pinning



CR-M2xS



CR-M3xS



CR-M4xS

2CDC 292 084 F0004

2CDC 292 085 F0004

2CDC 292 086 F0004

Accessories

Relays: see data sheet 2CDC 117 002 D02xx
 Pluggable function modules: see data sheet 2CDC 117 007 D02xx



ABB STOTZ-KONTAKT GmbH

Eppelheimer Straße 82 69123 Heidelberg, Germany

Postfach 10 16 80 69006 Heidelberg, Germany

Internet www.abb.de/epr

E-Mail epr-support@stotzkontakt.de